

GREYHOUND TAILS

NEWSLETTER FOR GREYHOUND PETS OF AMERICA - CENTRAL NEW HAMPSHIRE
Winter 2009/ Spring 2010

From the Director's Chair

Well here it is, another New Year celebration has come and gone. And with the passing of 2009 comes the passing of the keys, so to speak. Yes folks, we've had a lot of changes in the past year. But the last thing to change on the last day of the last month was the leadership of GPA-CNH. So will you all please join me in welcoming on board Mr. Charlie Wellman as your new Director! Also please broaden your smiles to usher in Mrs. Sandra Wellman as the new Keeper of the Hounds. Both as you well know have been no stranger to the GPA-CNH team. It is with tremendous pride and joy that Donna and I hand over a lean, clean and financially solvent and sound Greyhound placement organization.

In the past year we met several challenges head on. Some seemed insurmountable, others impossible. But with the help and hard, knuckle grinding work of every GPA associate we pulled it all off. Now we can all do the one thing that our organization exists for. Concentrate on finding loving forever homes for magnificent creatures of the Lord we know as Greyhounds.

As outgoing Director I would like to say that this has been a mighty fantastic experience. I will go forward now through life, forever keeping with me the memories of every good thing accomplished over the last 12 months. May God bless and keep you all.
Faithfully yours,
Reverend Jeffrey Betterini, Past Director

From the Editor,

As you have just read, there have been many changes within GPA-CNH over the past few months. Going forward there will be new leadership in many of the board positions. The new board members bring with them many, many years of experience with GH knowledge and experience. This will be a positive change for us as we face different challenges this year.

In addition to Charlie and Sandy Wellman, we will also have an Asst. Director. Although not official as of

this printing, the Asst. Director should be Steve Shepard. Many of you will remember Steve and his wife Linda from GPA reunion and other GH events around N.E., Dewey and GIG. They operated Blue Hound Traders for many years. Previous to Blue Hound Traders, they were very active GPA volunteers.

Our new foster home coordinator has years of GH experience. Marina Greene is also a returning GPA volunteer. She had been the volunteer coordinator, foster home and home visit volunteer. Previous to moving back to NH years ago, she volunteered with a GH adoption group in PA. She has over the years cultivated GH contacts outside our area which will be needed as we go forward.

Our event coordinator is a returning board member. Mark Dana has been active with M&G's for a number of years. In addition to our existing M&G locations, he has added Salem Petco back to the list. Amhurst Petco is a new location for us. Mark is always looking to add to our list of M&G locations. We have 2 locations that have expressed an interest in having GPA-NH at their store on a regular basis, Little Critters in Exeter, NH and Plaistow Petco. M&G leads along with support volunteers would be needed. If you live in these areas and would like to help, please contact Mark at events_coordinator@gpa-cnhc.org
The email link can also be found on the contact us page on our web site.

Speaking of our web site, I would like to personally thank Nicole Russell for all her work and perseverance. She had performed our web site make-over previous to the crash and had the forethought to save all the content. The past year has been a long, winding and bumpy road. However with Sandy and Charlie's approval our web site is back! It is easy to negotiate and loaded with lots of useful information.

Also back is our forum. We needed to start from scratch again, so any posts made in previous versions are gone. It is user friendly and non-members have read only access to view posts. It is the hope you will be interested enough at some point to join. The more the merrier! From the main page, click on forum. When you are ready, register and introduce yourself.
Con't next page

IN THIS ISSUE:

Featured Hounds	Page 3	Adventures with Matt, Buddy & Sonny	Page 11
The Rainbow Bridge	Pages 4-7	Banquet Ticket Information	Page 12
Dangers of Lyme disease	Page 8	Regular Events	Page 13
Conversations with Bill	Page 9	Event Corner	Page 14
Super Supplements	Page 10		

From the Editor con't,

The contact page has email links to the board members along with other contact email links. There is a link to contact the webmasters (Nicole and myself). If you have any suggestions, comments, etc. you may use that link.

There is a link for foster families to use to update their foster GH's general info. Update the GH's basic bio, any quirks and update pictures for the web site. This would go to the foster home coordinator, keeper of the dogs and webmasters all at once. It would save us the time forwarding this info to everyone. For any specific issues with your foster, please contact Marina and Sandy directly.

GH adoption is N.E. is now faced with a new challenge. Even though we knew a year in advance that racing in Mass would end in 2009, we were surprised when racing abruptly ended in NH.

First Hinsdale closed suddenly, filed for bankruptcy, never to re-open. Fast Friends in Keene were able to handle the dogs that were retired as racing kennels moved to other tracks. GPA-NH took a few last winter to help them a bit.

Next came the sudden decision by the NH legislature to allow the remain tracks to continue simulcast racing/betting, along with charity poker events, without live racing. The Lodge in Belmont had not yet opened for the summer, so there were few if any GH's there. Seabrook had originally decided not to have a summer meeting and open in the fall for the Mass. kennels to have a place to go when racing ended there. Seabrook also chose not to hold live racing with the legislative change. Rumor has it NH may be on the verge on passing legislation banning GH racing.

Wonderland in Mass never raced in 2009. Raynham raced until the end of 2009. As of mid Jan. the retired GH's have either already moved to an adoption group, or have been spoken for and the last word is that all GH's will have left Raynham by the end of Jan. 2010.

Twin River in Lincoln, RI has seemly ended GH racing. The news last year went back and forth. First they had shut down racing, then there were going have racing, then not again. I don't know if there are any GH's in residence at Twin River. Additionally nationwide 2 or 3 other tracks closed rather suddenly.

What this means is the days of driving a couple of hours and picking up a few dogs at a time has ended. There are still plenty of GH's looking for forever homes, how we will get them is the issue. Florida is swamped with retired GH's waiting for a couch to call their own. The breeding farms always have retired breeding stock looking for a home. There will also be young GH's at the training facilities that have shown little interest in chasing a lure, lack the drive or ability to run fast enough to race and be competitive. This will be a tough time for them as well, with 7 or 8 fewer tracks for them to go to.

How we will get GH's is the issue GPA and all adoption groups in the Northeast face. It's an issue that areas without racing and breeding farms have always dealt with; it's new territory for us. Whether we arrange a haul for us alone, or split hauls with other NE groups is something that will need to be discussed. Money will be a big issue. The last figures I heard from a couple of years ago is that it that hauling price per GH is between \$60 to \$100. Depending on where they will be coming from and how many come at a time. We will need to do some creative and aggressive fundraising to help defray the hauling charges to avoid raising adoption fees.

In addition to straight donations, another way to help would be to join us in our 2 main events during the year. Coming up May 1st is our annual banquet. The GPA store will be there selling their wares. If you cannot attend, please consider donating items for our raffle. No item is too small, they don't even need to be GH or pet related. We combine these to make gift baskets. Our annual reunion will be in the fall, date TBA. The same applies to the reunion as the banquet.

There are challenges we will face in taking in GH's from a haul. The first is to have committed foster homes lined up to take in these dogs. These arrangements may need to be made weeks in advance. These hauls will probably stop in a central location and participating groups will need to have volunteers drive there to pick up the GH's. Depending on how many GH's we take, volunteers with vans, SUV's that could hold 2 or more GH's would be needed.

Once in our possession, the next step would be processing. Baths, nail clipping, microchipping, picture taking, basic profiling, cat testing and then going to their foster homes. The more GH's we take in at a time, the more volunteers will be needed to help with this task. Even if you can't help with transporting or fostering, spending the afternoon playing with the new arrivals can be fun and rewarding.

If you would be interested in fostering, helping with transport or processing please contact Marina at foster_family_coordinator@gpa-cnhc.org or Sandy at keeper_of_dogs@gpa-cnhc.org . Email links are on the contact us page of the web site.

Diane

How To Take A Pulse

Position your dog in his side. ~ Slide your hand under the top back leg. ~ Feel for the crease where the body meets the leg. ~ Place your index finger and middle fingers along the groove where the artery is located. ~ Count the pulse for a minute. Or measure a 20-second pulse and multiply by 3.

Featuredhound Hossman



Hossman is a 4 year old fawn male. He needs to go to a home without cats and small dogs. Hossman is considered a special needs GH as he has seizures, He has been in foster care for some time and his seizures are under control now that the correct medication dosage has been found. He will need to go to a home committed to giving him his medication on schedule. Below is an update from his foster home:

Hossman's medicines cost under \$10.00 for a three month supply. We do not have him on any special diet, but he tends to eat anything that he can smell on the counter, in the sink, out of our coffee cups...you get the idea. He has had only a couple of seizures this past year. If there is a drastic change in his environment then he will probably have one. We were away overnight and someone stayed at the house, and he had one then. There is really nothing you can do other than just make sure there are no other dogs around him when he does have a seizure and keep him from hurting himself. When it is over they are very disoriented and will pace the house and drink lots of water. It is best to keep a log of his seizures so the vet knows what is going on.

He loves to lie on the couch and will not move unless you move him. He prefers a chair to the floor. When he is let out in our back yard, he will run and pounce the other dogs. I have to keep an eye on him so he does not get too rough.

Watching him play with toys is hysterical. He will throw them everywhere, and yes, he thinks our shoes are his toys. I have never seen him chew up anything. He crates fine as long as there is a very comfy quilt in it.

Editor's note: I typed in canine seizures and found many links with information on seizures. You could also search canine epilepsy for more info. Here is a partial list:

<http://www.canine-seizures.freeservers.com/index.htm>

http://www.canine-epilepsy-guardian-angels.com/seizures_overview.htm

<http://www.ahofp.com/Guide/Canseize.htm>

http://www.canine-epilepsy.net/basics/basics_index.html

<http://www.canine-epilepsy-guardian-angels.com/>

<http://www.canine-epilepsy.com/>

<http://www.canine-epilepsy.net/>

Please consider giving Hossman a couch of his own.

Things We Can Learn From our Dogs.

From 50 Simple Ways to Pamper your Dog.

We fill our days meeting work deadlines, maneuvering in traffic and grocery shopping. What are priorities among canines? Let me illustrate with this anonymous gem found floating on the internet:

Run, romp and play daily.

When your happy, dance around and wag your entire body.

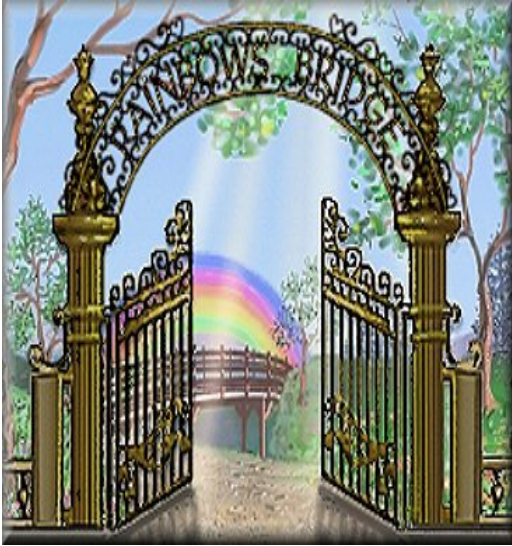
Never pass up the opportunity to go for a joyride.

If you want what lies buried, dig until you find it.

When it's in your best interest, practice obedience.

Tap naps and stretch before rising.

The Rainbow Bridge



Just this side of heaven is a place called Rainbow Bridge.

When an animal dies that has been especially close to someone here, that pet goes to Rainbow Bridge.

There are meadows and hills for all of our special friends so they can run and play together.

There is plenty of food, water and sunshine, and our friends are warm and comfortable.

All the animals who had been ill and old are restored to health and vigor; those who were hurt or maimed are made whole and strong again, just as we remember them in our dreams of days and times gone by.

The animals are happy and content, except for one small thing; they each miss someone very special to them, who had to be left behind.

They all run and play together, but the day comes when one suddenly stops and looks into the distance. His bright eyes are intent; his eager body quivers. Suddenly he begins to run from the group, flying over the green grass, his legs carrying him faster and faster.

You have been spotted, and when you and your special friend finally meet, you cling together in joyous reunion, never to be parted again. The happy kisses rain upon your face; your hands again caress the beloved head, and you look once more into the trusting eyes of your pet, so long gone from your life but never absent from your heart.

Then you cross Rainbow Bridge together.

Author unknown...



Hunter

November 25, 1999 – October 9, 2009

Hunter became part of our family in July of 2001. From the very beginning, he was kind and gentle. He was nervous about living in a home for the first time and he continued to be an anxious dog with many fears. He was most especially afraid of floors. Despite those fears, he began to relax and show his sweet spirit and personality. He always wanted to be hugged. He loved to put his head on our shoulders and just lean. He loved to be with Marsha and chase her around the backyard. He enjoyed his walks and loved to go on hikes in the woods.

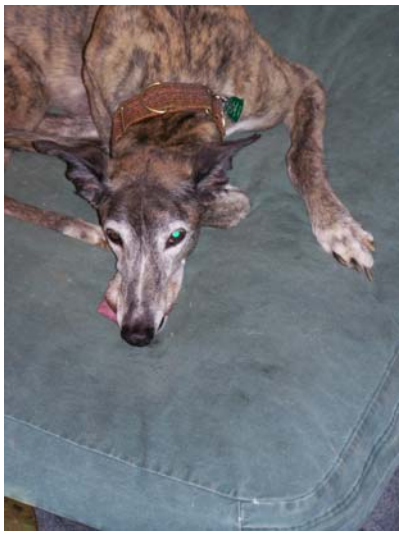
When our daughter, Claire, was born in April of 2006, Hunter immediately fell in love with her. During the 3 ½ years he spent with her, the two of them formed an amazing bond of love. He loved to spend time with her - walking, playing in the backyard, lying down next to her and listening to her read to him, and just snuggling with her. All of his anxieties and fears seemed to disappear when he was with her. They were inseparable best friends.

During Hunter's last days, he showed great courage. He never complained, but remained the most loving and gentle dog. Claire, knowing he would not be able to get better, spent those days by his side, hand-feeding him boiled chicken, reading him books, and holding him. Every day, she told him that she would always love him. And he knew that. We loved him from the moment we met him. We will always love him and be grateful for all of the gifts he has brought to our lives.

Jen Beland-Mosher and Ben Mosher



The Rainbow Bridge Con't



Aljo Class Act "Buddy"

12-8-1998 / 8-29-09

Buddy came to me via a private home. After a few years with that family, they wanted to re-home him. They had some concerns with him and children. On first meetings it seemed their concerns were unfounded. However after a few weeks another side emerged. He didn't like being asked to get off a dog bed he had already claimed. He also wanted to eat the other dogs' food when he finished first.

Buddy came here only a few weeks after Willows passing. My mother was also very ill and weekend evenings were spent sleeping at her house. Looking back it probably wasn't the best time to be bringing home a new dog.

I know he would need a dental. Well...\$1000 and 23 teeth later, he came to live with Matt, foster Jack and myself.

The first few months were a trial...getting to know each other. Also for him to accept that my word was law and I would prevail. Once we came to an understanding, things settled down.

Back to his dental issues. He had many dentals with his previous family, with extractions each time. After his last one, he only had his bottom 2 canines left. However there was something odd about them. One especially would stick out pass his lip. It was always a topic of conversation where ever we were.

One Sunday AM after our walk, he was unable to get back up the 4 stairs into the house. He didn't want me to pick him up. I got the dog ramp out; he wanted no part of that either. All I could do was put him in the van and off to the e-vet we went. Meds were given to ease any pain and inflammation. X rays at our vet showed no fractures or problems. They looked quite good for a 10 year old. New meds were given. However his hind end was still very weak and not improving. Out came Willow's waterproof bedding and mattress pads. I set up an area with xpens and bedding in the living room when I went to work. All he could do was to go outside to relieve himself. I had to carry him back into the house and he would stumble across the room to his new area.

This was no life for him. The last 2 days he wouldn't get up to eat. Friday was the worse, he could barely stand up at all. So Sat. AM I made the decision I've had to make so many times before, to ease any pain and discomfort and send him to be with all the others that have gone before. He is now pain free, running with a mouth full of teeth again.

Diane Canfield

The Rainbow Bridge Con't

Our Dog Doug

In my family we have a saying: "give a strong name to a child and they will live up to it". We accidently gave our dog a strong name, and he also lived up to it. His racing name was Alabama Doug, which we assumed he knew so we called him Doug. He broke the rules for who a greyhound is supposed to be, and we loved him for it. I joked when we got him that he was going to have to work for a living if he expected me to feed him. Little did I know how much he would do, nor could have guessed that by the time he died more than a hundred people would know him by name.

Doug was a dog that actually led a life of distinct purpose. I believe all dogs have a purpose, it just seemed bigger to me with Doug. I'm not sure why that happened with Doug, only grateful that God let us share in it. We first got Doug to be a companion for Laura after she hurt her back and was relatively house bound for a long time. He encouraged both of us in a dark time and quickly started on his own to find ways to help around the house. When Laura needed to stand up from resting or having fallen, Doug came and paused by her side, visibly braced his legs, and let her to use him as crutch for rising up. This he offered every day for years, even when he was too old to actually support her, he still offered.

Laura saw his empathetic spirit, so she trained him for service and he passed all his tests to become a therapy dog. He was 5 or 6 at the time, so you really can teach an old dog many new tricks. From there he worked regularly at the nursing homes, particularly with Alzheimer's patients, who could not remember much that happened, or Laura's name, but always knew Doug's name when they saw him coming down the hall. His greatest gift to these people was his ability to bring conversation to a silent room, full of family, who didn't know what to say to the elders they were visiting. He brought joy and healing to many, not just the people I felt comfortable with, but always with people who needed us. He was at the hospital when my grandmother was dying and comforted the 20 or more family members who came to be with her. He often used a trick Laura taught him called "cuddles", where upon he would walk away from Laura and rest his head upon a stranger's or a friend's lap.

After he got too old to stand on slippery linoleum floors, Laura decided it was time to start him on a new career. Among his endearing qualities was a love of books. Yes it sounds strange, but he would always sniff and take notice of books. When you read, he would sniff the corners of each page, probably looking for the smell of who read it before, but it honestly looked like he was reading the words. Thus began his new job as a therapy reading dog. Libraries are always carpeted, and children love to read. So Laura found children with ADD, who had a hard time sitting still long enough to read, and let them read to Doug, who loved the attention, and of course picking his head up off their lap long enough to sniff the pages when they were turned. In very short time, children who could not read for more than 5 minutes would read for 30 minutes and complain when they had to leave the library. It was quite miraculous to say the least.

Of course that was his job during the week, on weekends he still kept busy occasionally attending meet and greets, and helping to tell other people about how wonderful it is to adopt a greyhound. He had an entire high school freshman class write him letters of appreciation after he visited them to have his story told, encouraging them when life was changing and the future uncertain.

I walked with him every day, he never pulled on a leash, but on several occasions he forcefully dragged me across the street, or back into the house. When I investigated why, I found that a black bear was less than 200 feet away, or a moose was rounding the side yard. Deer and turkeys on the other hand he faithfully chased, even if it was only in his dreams. Stories of his different jobs have appeared in at least 3 newspaper articles, and if you google "NH GPA YouTube video" his photo will appear on the Google® search engine results page. (clicking on the photo link is worth trying too).

Doug had many illnesses and track injuries that came back to haunt him over the years. This made finances difficult and added stress to our life. It also allowed Laura to reach out to others who were hurting and ill. They sympathized with Doug, and felt that somehow that even if other dogs were annoying, this one was OK, because he had suffered in life just as they had. People understood Doug had suffered too, yet he still smiled and still offered to help others however he could.

I did not know that a dog could do, or be, so much in both our lives and in the world. We found that a single humble greyhound can touch hundreds of lives if you let them.

Con't next page

The Rainbow Bridge Con't

Our Dog Doug, con't

I would encourage everyone out there live a life with purpose and joy, then let a dog share that joy and purpose, you never know where it may take you, but it will be good.

Brad and Laura Crannell



Pictured above are some scenes from Doug's life. Clockwise, Doug with his best friend Finbar (there are together once again); Doug taking a nap with his 'dad' Brad; one of Doug's many newspaper photo opps helping his 'mom' Laura making a sales pitch for her homemade jewelry line; Doug all dressed up ready for work.

Dogisms

True, dogs can't speak words. But some four-legged philosophers have wagged an enlightening thought or two. If your mark is worse than your bite, then you're not biting hard enough. Moose (A.K.A. Eddie from Frazier)

Some days you're the dog, some days you're the hydrant. Unknown

A dog is the only thing on earth that loves you more than he loves himself. Josh Billings

Heaven goes by favor. If it went by merit, you would stay out and your dog would go in. Mark Twain

Dangers of Lyme Disease

By Jen Beland-Mosher and Ben Mosher

Our two greyhounds were never outdoorsy types. Of course, they enjoyed their daily walks around the neighborhood and sprinting in our backyard, but other than that, they preferred napping indoors. When they were younger and we were first considering the Lyme vaccine, our vet in Portsmouth suggested that, considering their preference for the indoors, the vaccine was not necessary. We didn't know a lot about the vaccine at that time and were concerned with possible risks and side effects, so we agreed with the vet and declined. What we didn't consider was the incredible risk to their health if we opted against the vaccine and they contracted Lyme Disease.

It started during the summer of 2007. Hunter, then 7 years old, tested positive for exposure to Lyme on the heartworm / Lyme test at his regular check-up. At that point, we decided to do a C6 blood test to determine more specific information about his Lyme Disease, and at the same time, began treatment with antibiotics. When the test results came back, the vet was concerned about the high C6 levels, and felt that the numbers indicated that he may experience many outward signs and symptoms, including decreased kidney functioning. Luckily, Hunter never demonstrated any of those signs or symptoms. We did continue with further antibiotic treatment and follow-up blood tests to monitor him, but we were very lucky. The levels in his blood decreased and he continued to feel very well. We felt so relieved.

We weren't as lucky in the winter of 2009. Marsha, then 10 years old, and Hunter, then 9 years old, both went to their new vet, Dr. Reeve, in Pembroke, for a routine check up and dental cleaning. Marsha tested positive for Lyme this time. Dr. Reeve suggested we begin antibiotic treatment. She also suggested that some of the symptoms that we had been seeing (shaky legs, some joint discomfort) were most likely not simply signs of possible arthritis and normal aging. She suggested that they may have been clinical signs of Lyme disease. Ben and I felt so badly for missing this. It had been nearly a year since Marsha's last Lyme / heartworm test, so it is possible that those signs we had been seeing for almost a year had been due, at least in part, to Lyme disease. We felt terrible and so guilty that Marsha had been suffering. We did some follow-up C6 blood tests and they came back quite elevated. Unfortunately, even after another round of antibiotics, Marsha still demonstrated the shaky legs and joint pain. Dr. Reeve suggested we do a urine test. She found protein and blood in the urine and suggested that it may indicate issues with kidney function. We started with another round of antibiotics and did further kidney functioning blood work. Things were very serious and Marsha had some significant kidney damage. We gave subcutaneous fluids at home to her and then followed up with a week-long stay at the vet for dialysis. After dialysis, we continued with the subcutaneous fluids for a little while. Follow-up testing showed that the kidney damage was not permanent and that Marsha's kidneys were again functioning normally. We decided to put her on a prescription kidney protective diet just to ensure continued kidney health.

We thought we were doing everything right. We regularly gave our dogs their frontline treatments and consistently checked them for ticks. Unfortunately, this was not enough. The ticks that transmit Lyme Disease are so small and can easily be missed. We made a mistake when we opted not to get the Lyme vaccine for our dogs so many years ago. Of course, now, we choose to vaccinate.

We hope that others will learn from our own experience, and that is why we are sharing it. Please keep up with the frontline and tick checking. But, please also seriously consider the Lyme vaccine and discuss it with your vet. Lyme Disease is so common now and even dogs who don't spend much time outside can easily get it. We thought our dogs were safe from Lyme, but we were so wrong. We don't want this to happen to anyone else.



It may not seem like it now, but spring is just around the corner. This is a list of some plants that are poisonous to dogs.

Buttercups	Jonquil bulbs
Caladium	Lily of the valley
Calla Lilly	Mistletoe
Crocus bulbs	Narcissus bulbs
Daffodil bulbs	Oleander
Easter Lily bulbs	Poinsettia
Hemlock	Skunk cabbage
Hydrangea	Yew

Conversations with Bill

By Lari Parsons and Fly Bye Bill

Bill lives with Lori and her husband Michael, 2 skin kids and 4 other dogs.

Bill raced 157 times at West Palm Beach. He has some quirks but that only makes him more lovable. Not only is he a finicky eater, he is linoleum intolerant and is afraid of riding.

Lori has been documenting his eating habits in an ongoing thread on GreyTalk and has allowed me to share their conversations. Here is Part 1. More to come in following issues.

Aug. 6, 2009

Me: Bill what are you staring at?

Bill: You.

Me: Why?

Bill: Do you know what time it is?

Me: Yes I do.

Bill: Well I'm Hungry.

Me: I will fix it in a minute, just as soon as I am finished here.

Bill: I'm starving you know.

Me : No you're not.

Bill: I will be if you don't feed me soon.

Just a bit later.

Me: Come on Bill time to eat.

Bill: It's about time.

Me: You know if you would eat in the morning you wouldn't be so hungry right now.

Bill: Just put the bowl down. What's in there?

Me: Let's see. There are a couple of legs and feet. Some chicken livers and gizzards. Some beef kidney, beef tripe, a bit of hamburger and half a pork chop oh and by the way I had just a bit of stuffing left from last night and I divided it amongst you. Bon apatit! I am going to go get cookies and pills ready while you eat.

About 15 minutes later.

Me: Your not done yet and it looks like you are planning on playing buried treasure! I thought you were hungry?

Bill: Where did you get that idea?

Me: From you!

Bill: I ate the liver and lizards and the pork chop.

Me: That is not nearly enough Bill.

Bill: I am watching my weight.

Me: Bill we were at the vets yesterday...

Bill: I know! I'm the one that got stuck!

Me:...and you have lost 2 pounds and not gained any!!

Bill: Do you have any cookies?

Me: I have something better.

Bill: REEEEEALY!

Me: Look what I have!

Bill: moooooosshheee!!

Me: Control yourself there Bill you're drooling all over yourself. Do you want this?

Bill: You know I do. Hey! What are you doing to that mooshie?!

Me: I am dividing it into 4 pieces.

Bill: Why?

Me: I am going to play buried treasure.

Bill: Oh yeah? Now what are you doing with that mooshie?

Me : I am putting it in your bowl. I am actually hiding the pieces in your bowl. If you want the mooshie pieces you have to eat your way to them. Happy hunting.

Bill: Copy cat! You think you are so smart.

Me: Hurry up the rest of the gang is waiting for you to finish so they can have their cookies.

Bill: Fine then! You just make sure to be ready with the cookies.

Aug. 15, 2009

Me: Eat Bill! Please!

Bill: Nope.

Me: I will just sit here and make necklaces.

Bill: String away. I'll just snooze in the laundry.

Me: I have a lot of beads and more arrived today.

Bill: I'm a hound, I can sleep all day.

Me: Bill you are going to be starving tomorrow.

Bill: I will survive.

Me: We'll see about that. No cookies.

Bill:(Blink)

Me: No licking empty ice cream bowls.

Bill:(lick lips)

Me: No mooshies.

Bill:(gulp)

Me: No tidbits off of any ones plate. Nothing! Just the water in your bowl.

Bill: I am strong.

Me: We shall see.

FYI: mooshies=marshmallows



Dogisms

by Moose (AKA Eddie form Frazier)

He who learns fast, gets fewer treats

Super Supplements

From: 50 Simple Ways to Pamper Your Dog

You can help your dog's muscles move more fluidly, put the shine back into his coat, and fend off itchy skin or achy joints. Although dog foods are constantly being fortified, dogs don't always get the right amount of vitamins and minerals that they need.

Make your dog her healthiest with supplements. Before you start though, discuss the proper supplements dosages with your veterinarian.

What's the Best Choice for My Dog?

Acidophilus: This beneficial bacteria helps detoxify and fortify the digestive tract as well as aid in the absorption of nutrients. Count on this supplement to treat diarrhea, gas, bad breath, and foul-spelling feces.

Amino Acids: It may surprise you, but the biggest deficiency in dog diets is amino acids. If you remember back to your high school science class, these are the building blocks of protein that enhance hormone production, maintain healthy muscles and tissues, and support metabolism.

Antioxidants: To help you remember the most important antioxidants, think ACES. That stands for vitamins A, C and E plus the mineral selenium. Antioxidants help fend off environmental toxins, lessen the risk for certain cancers, and bolster your dog's immune system.

Biotin: This multibenefit supplement aids in cellular growth, digestion, muscle formation, and skin repair.

Brewer's Yeast: This is a natural source of quality protein, trace minerals, salts, and B vitamins. It also helps repel fleas.

B Vitamins: This group, specifically biotin and folic acid, provide energy. These vitamins convert carbohydrates into glucose (blood sugar) and speed up metabolism. They also boost the immune system and produce healthy fur and skin.

Calcium, magnesium, phosphorus, and zinc: This foursome works together to keep your dog's nervous system working at its best. It also fortifies the teeth and bones. But be patient: it may be a month or so before you'll notice the results.

Cleansers and detoxifiers: Chlorophyll, algae, barley, wheatgrass, spinach, broccoli, and kelp bolster the immune system and cleanse the blood. These are ideal supplements for aging dogs and for those recovering from cancer and surgery.

Glucosamine and chondroitin sulfate: These supplements are effective in combating arthritis. They reduce joint swelling, improve circulation, and promote production of synovial fluid, which lubricates the joints. Shark cartilage tablets can also be taken daily to enhance joint mobility that has been limited by arthritis.

Iodine: This vital mineral helps dogs maintain a healthy weight, stimulates normal bone growth, and boosts energy levels.

Omega-6 and omega-3 fatty acid supplements: Tame itchy skin due to allergies by giving these supplements. They also assist cell development in the immune system and brain.

Papaya enzyme: Clear the air of doggie gas by feeding your flatulent four-legged friend this enzyme. It naturally breaks down gas-producing particles in the dog's digestive tract.

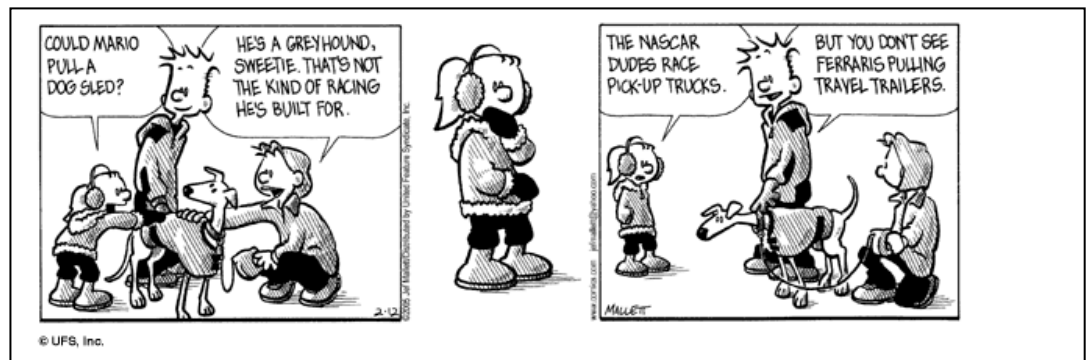
Giving Supplements

Pamper your dog's health by following these supplement guidelines:

Take into account your dog's size, age, physical condition, and stress level.

Always follow label directions and never oversupplement.

Introduce one supplement at a time to your dog's breakfast or dinner. Wait a few days to detect any side effects before adding another supplement.



Adventures with Matt, Buddy and Sonny (and Diane)

The 'kids' and I had another event filled 2009. It started with spending the day with friends at Seabrook GH Park for the Adoption Weekend. Every one was looking forward to a rematch on the track with Kelan, as he blew 'em away last year at Wonderland. However without racing taking place the track wasn't in condition for racing. We had a nice afternoon visiting, a box lunch, raffle a kennel tour and the money cube. My ticket was one that was picked and I had the chance to spend 1 minute in the box of flying bills. A young volunteer wanted to try it, so I let him go in for me. He collected \$245., and I gave him a token of my appreciation.

Then in July we made the long trip to the Finger Lakes Region in NY for Grapehounds. This year we were at Lake Seneca. New scenery, new wineries. The weather was nice, although a bit warm again this year. With my friends Audrey and Bob, we made a side trip to Watkins Glen State Park. It was a nice morning, however a bit tough on these old knees. It was @ a 2 hour walk up most of the falls..and the same back down. That same weekend was a PT Cruiser gathering, some of them were quite impressive customized.

Sadly that was Buddy's last adventure. He went to the bridge at the end of August. After that Matt and I had some alone time. It's was the first time I had only 1 dog since 1998. At the end of Sept. my friend Laurie told me about another GH needing a home. So Sonny joined us at the beginning of Oct., just in time for our annual trip to Dewey Beach Delaware.

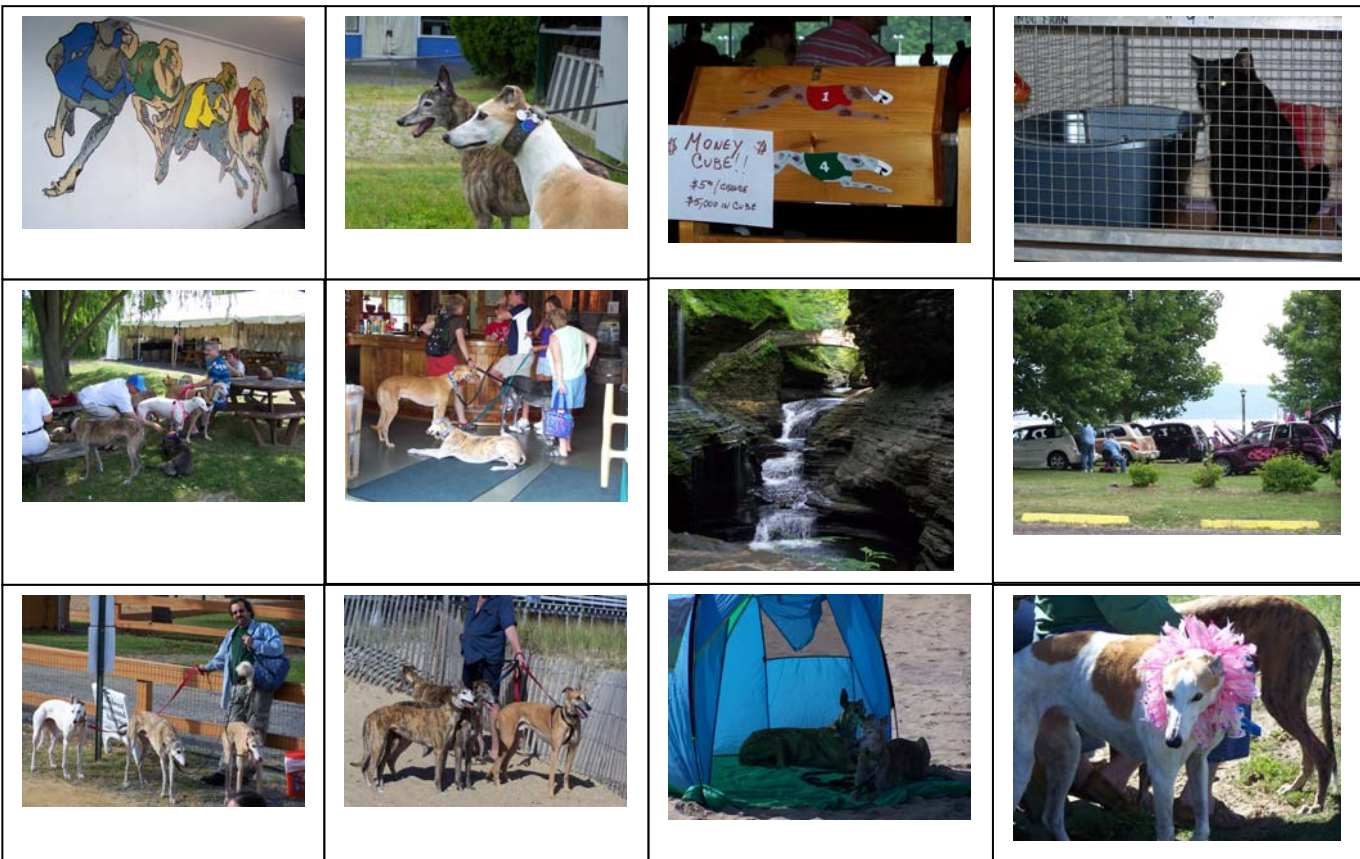
Held on Columbus weekend each year, it's our favorite trip. The weather was very nice for the most part. Even though the event went through some major changes this past year, it was still a nice time for all. The beach was still there, the vendors still came, there were still some seminars..and most important...the Greyhounds and their people still came. Albeit in smaller numbers.

Below are some pictures from our travels.

The first row: Wall painting at Seabrook; Kelan and Buddy wondering why they can't run!; the money cube ticket box; and Seabrook Adoption Kennel GH cat tester.

Second row: GH relaxing in the shade at a Grapehound winery; GH's wine tasting; Watkins Glen waterfall; PT Cruiser club gathering.

Third row: Dewey pics. Audrey's husband Bob was our dog sitter while we were shopping. (L to r) Audrey's GH Nova, Matt, Sonny and Bob's dog Cosmo in his pouch; GH's happy to be at the beach; chillin' in the pup tent; a girl showing off her new necklace.





GREYHOUND PETS of AMERICA - Central NH Chapter

is pleased to announce their
ANNUAL SPRING BENEFIT DINNER

May 1, 2010 at 6pm

Puritan Conference Center in Manchester, NH

Please join us for a wonderful dinner, plenty of greyhound items to buy from the GPA Store, along with splendid raffle prizes. Please come spend the evening with us. Connect with old friends, while making new ones. We all have GH's in common! The more the merrier!

The entertainment will be posted on our web site when finalized. Please check there often. Tickets are \$30.00 per person.

Tickets are limited to 100 guests—reserve your tickets today!

Please email events_coordinator@gpa-cnhc.org or director@gpa-cnhc.org, or call 888-507-9597 to reserve tickets first then send in this form with your payment.

Tickets \$30 per person

Number of tickets requested: _____ **Total cost:** _____

Name: _____

Address: _____

City / State / Zip: _____

Phone Number: _____

Make checks payable to: GPA-CNHC (include "Spring Dinner Tickets" on memo line)

Send checks to: GPA-CNHC, PO Box 778, Concord, NH 03302-0778

NOTE: We are now accepting items for our raffle. No item is too small! Please email events_coordinator@gpa-cnhc.org or call 888-507-9597 to coordinate pick-up/drop-off of your items. The hounds GREYTLY appreciate it!

Make checks payable to: GPA-CNHC (include "Spring Dinner Tickets" on memo line)

Send checks to: GPA-CNHC

PO Box 778

Concord, NH 03302-0778

UPCOMING EVENTS

~~~Sandy Paws~~~  
Jekyll Island, Georgia  
March 4-7, 2010

<http://www.sandypaws.org/index.php?page=1>

~~~Greyhounds In Gettysburg~~~  
April 23-25, 2010

www.greyhoundsingettysburg

~~~GPA-CNHC Annual Spring Banquet~~~  
May 1, 2010

Purtian Backroom, Manchester, NH  
More details to follow

~~~Greyhound Friends, Hopkington, Mass~~~  
May 15 & 16, 2010 - Annual Spring Open House

<http://www.greyhound.org/index.cfm>

July 29,30,31-August 1

~~~4<sup>th</sup> annual Grapehounds. Seneca Lake, NY~~~

If you like GH's and wine...this is your event!

<http://www.grapehounds.com/>

~~~Fall 2010~~~

GPA Annual Reunion
Rollins Park Concord, NH
Date TBA

~~~Greyhounds Reach The Beach~~~

Dewey Beach, Del.

October 8-10, 2010, 2009

<http://www.greyhoundsreachthebeach.com/>

# REGULAR SCHEDULED EVENTS

Below is a schedule of our ongoing regular events. Called Meet & Greets. This is where we show off our GH's and answer questions about GH's as pets. Many times this will be someone's first exposure to GH's.

For someone that would like to help spread the word but feels that fostering might be a bit too much for them, this is an excellent opportunity to help out. Many of you met your first GH at a M&G.

If your GH loves people, other animals (esp. the little ones), we would love to have anyone stop by and help out.

## First Saturday of the month

Amherst Petco 10am to 2pm

## Second Saturday of the month

Manchester Petco 10am to 2pm

## Second Sunday of the month

Nashua Petco 11am to 2pm

## Third Saturday of the month

Portsmouth Petco Noon to 3pm

Salem Petco 10am to 2pm

## Fourth Saturday of the month

Pet Adoption Day Pelham, NH

11am to 2pm

## Fourth Sunday of the month

Concord Petco 12:30pm to 3:30pm

# OPEN HOUSE

## First Sunday of the month Warner, NH

Take Rt.89 north to Exit 7 (Davisville /Rt. 103). At the bottom of the exit go east on Rt. 103 for about 1 mile then take a left onto Rt. 127. Approx. ½ mile turn left onto Poverty Plains Rd. Dirt drive for Woodlawn Training Center is ¼ mile on your left.

~~~~~ Please consider fostering ~~~~~

Unlike many GH adoption groups who have an actual kennel to house their retired racers, GPA utilizes foster homes only. All GH adoption groups in NH, ME, and Mass are filled to overflowing with retired GH's. Even though racing seems to come to an end in N.E., there are still plenty of GH's waiting in other states. Not only retired racers, but ones that were not competitive enough in training and retired brood dams and sires. As a group GPA can only take as many as we have foster places for. We would like to give as many of these GH's a chance for a home of their own. If you've ever considered fostering, this would be a great time to give it a try. If you've thought about adding another GH to your home, many foster with intent. The intent being that they foster with the intent on adopting if the fit is right for the home. GPA has done all necessary medical needs, and will reimburse foster homes for food. If interested in fostering, please contact foster home coordinator Marina Greene at foster_family_coordinator@gpa-cnhc.org

The Events Corner

By Mark Dana

Well history has a way of repeating itself...

I must say that I'm very please to be able to once again offer my time and effort as the Events Coordinators for GPA-CNHC.

I worked in this capacity back in 04, 05, like then the challenge is to keep all the events going and trying to find new volunteers as well foster families to attend monthly Meet-n-Greets (M-n-G).

If you happen to come across an event that could benefit GPA-CNHC please contact me events_coordinator@gpa-cnhc.org , we can talk about the event.

GPA-CNHC was lucky to start a new M-n-G at Petco, Amherst, NH; thanks to Lisa Jones who took over the lead from me this February. She has been attending the M-n-G with Grace and Bear, I'm sure she would enjoy seeing anyone who would like to stop by on the first Saturday of the month between 10 and 2 p.m. Lisa is a great example of our volunteers, Lisa has been a foster family volunteer and now a great addition to our M-n-G volunteers.

I would like to thank Jody Klenk, who has given many hours of her time as Co-Lead at Petco Nashua. Jody needed to take her leave from the M-n-G's, we wish her all the best and hope someday soon she can rejoin us, Thank You Jody!

GPA-CNHC always needs to thank the efforts of the M-n-G leads as well the M-n-G volunteers who monthly show up and help to facilitate our adoptions and donations at the M-n-G's. Keep up the good work and remember your efforts are not in vain...

I would like to also thank everyone who helped with the Petco's Photo's W/Santa fund raiser especially to those who sat all day in the Santa suite and those behind the camera. Again without our volunteers working together we could not complete our tasks.

I did two Photo's W/Santa and had a lot of fun. I was lucky to have help from two of my co-workers Laura Weyant and Steve Webster who did both events. Laura "womaned" the camera and Steve donned the suite.

Up coming Annual events are the Spring Banquet on May 1st 2010 and the Re-union late summer.

As always we are looking not only to see all of our old friends and adopters, but to collect items, gift cards, and the like to be auctioned off, by themselves or in a basket with other items...

Best Regards'
Mark J. Dana
Events Coordinator



Meet and Greets

Meet and Greets are a big part of GPA-CNHC's presence in New Hampshire. While they are fun to do, it is a big commitment for those that participate. The M&G leads shoulder the main burden, acting as liaison between GPA and each individual store. They also have to be willing to put their other interests aside for that day each month to attend. They must be knowledgeable about GH's and follow GPA National Policy to remain neutral on racing issues.

The old saying holds true for M&G's "the more the merrier". While we are fortunate to have reliable leads and a small group of volunteers to help each location, it would be helpful to have even more. After all, life does get in the way from time to time and it would be helpful to have others to pick up the slack when that happens.

If you are interested and live near one of the M&G locations, stop in and say 'Hello'. It is also important to remember that not all GH's have the temperament for M&G's. Our M&G's are either 3 or 4 hours and that can be a long day for them. GH's that don't get away from the house a lot may be overwhelmed at first. Watch for signs of stress and either take them for a walk for a change of scenery or take them home until the next month.

It is also important to remember that there will be many other sizes, shapes and temperaments of dogs at pet stores. At Portsmouth we have had cats on leashes and once a duck following his owner. If your GH doesn't do when in public under these circumstances, M&G's may not be for you and your GH. We have many volunteer opportunities, so contact us if you are interested in helping in some way.

GPA-CNHC Policy

To all of our members, please be reminded that GPA-CNHC adheres to National GPA Policy and Procedure. The primary objectives are to:

- Locate responsible, loving homes for greyhounds that fail to qualify, or no longer qualify for the racetrack.
- Educate the public about greyhounds, stressing their desirability as pets.

The GPA position is that we are primarily interested in the welfare of the greyhound. We are NOT animal activists, nor an animal rights organization. However, GPA will take appropriate action if we see a greyhound mistreated or abused. We will do what needs to be done to get the abuse stopped as quickly as possible through the proper authorities.

GPA is politically NEUTRAL and is neither pro- nor anti-racing. GPA representatives are required to remain factual on all issues. If engaged in conversation which moves toward negative issues, we can best serve the greyhounds by emphasizing what wonderful pets they make and why. It is possible that upon determination that a member has engaged in conduct materially and seriously prejudicial to the interests or purposes of GPA, they will be terminated from the organization. Thank you all for doing your best to comply with our mission.



Please consider a donation to GPA



We are an official 501c non-profit organization. IRS TAX ID# 02-0424800
Your donations are tax deductible. The hounds thank-you!

\$10.00 Individual

\$15.00 Family

\$25.00 Sponsor

\$50.00 Donor

\$100.00 Benefactor

\$100.00+ Angel

Send checks to: **GPA-CNHC**
PO Box 778
Concord, NH 03302-0778

Name: _____

Address: _____

City / State / Zip: _____

On behalf of GPA-CNHC, I would like to thank Len Ullmann and AliGraphics for generously keeping our printing cost low, allowing us to continue to publish this newsletter.



333 Westchester Avenue
White Plains, NY 10604-2910
P: 914 367 4101
F: 914 367 4111

lullmann@aligraphics.com
www.aligraphics.com

Leonard Ullmann

an affiliate of Amalgamated Life



DECO DOGS DAYCARE & GROOMING
21 BACK RIVER ROAD
DOVER, NH 03820
603-749-PETS

GH only play group at Deco Dogs, second Sat. of the month from 9-11. \$10. for your first GH, \$5. for each additional. 50% of the proceeds go to GPA and GPS. Nails trims \$5. Open to all GH's. Muzzles required.

**Greyhound Pets of America
Central New Hampshire Chapter
P.O. Box 778
Concord, NH 03302-0778
888-507-9597
www.gpa-cnhc.org**

**Non Profit Org
US Postage Paid
Concord, NH
Permit #30**

Return Service Requested

**Greyhound Tails
Newsletter of GPA-CNHC**

Greyhound Tails is the official newsletter of Greyhound Pets of America's Central New Hampshire chapter and is distributed to GPA-CNHC supporters. It is also available to other similar humane groups, veterinarians, etc. This newsletter has two main purposes: to inform and entertain. To meet these goals we welcome reader submissions, letters, items of interest, articles, photos, stories, original cartoons, humorous items, veterinary information, helpful hints, etc. Publication is quarterly, with submission deadlines of Feb. 1, May 1, Aug. 1, Nov. 1. Photos not taken at a public event must have the subject's written permission to publish accompanying them when submitted.

Please send your materials to Greyhound Tails, P.O. Box 778, Concord, NH 03302-0778 or email them to the newsletter editor: newsletter_editor@gpa-cnhc.org